



OUTBACK RIGGING WELCOMES YOU TO ALEXANDRA PALACE

Rigging at Alexandra Palace

Outback Rigging Ltd is the Rigging Service Partner for Alexandra Palace. Whatever your event from a Jay-Z concert to shooting a Barclays Bank commercial If your event requires rigging in Alexandra Palace Outback will make it happen for you With the minimum of fuss.

Outback have been serving Alexandra Palaces clients for over ten years, our team of fully qualified riggers and supervisors have a complete understanding of the engineering of both the Great and West Halls .We can produce rigging plots for you in CAD and calculate loads quickly and efficiently to ensure your event happens the way you want it . Outback are happy to attend production / planning meetings free of charge.

We would welcome the opportunity to supply, plan, manage and install all of your rigging requirements at Alexandra Palace as choosing Outback can often save time and money ensuring a hassle free load in. Please read on for a simple step by step guide to safe, cost effective rigging solutions at Alexandra Palace.






Outback Rigging Ltd
Unit 5, Kendal Court
London. W3 0RU.
0208 993 0066
Web: www.outbackrigging.com

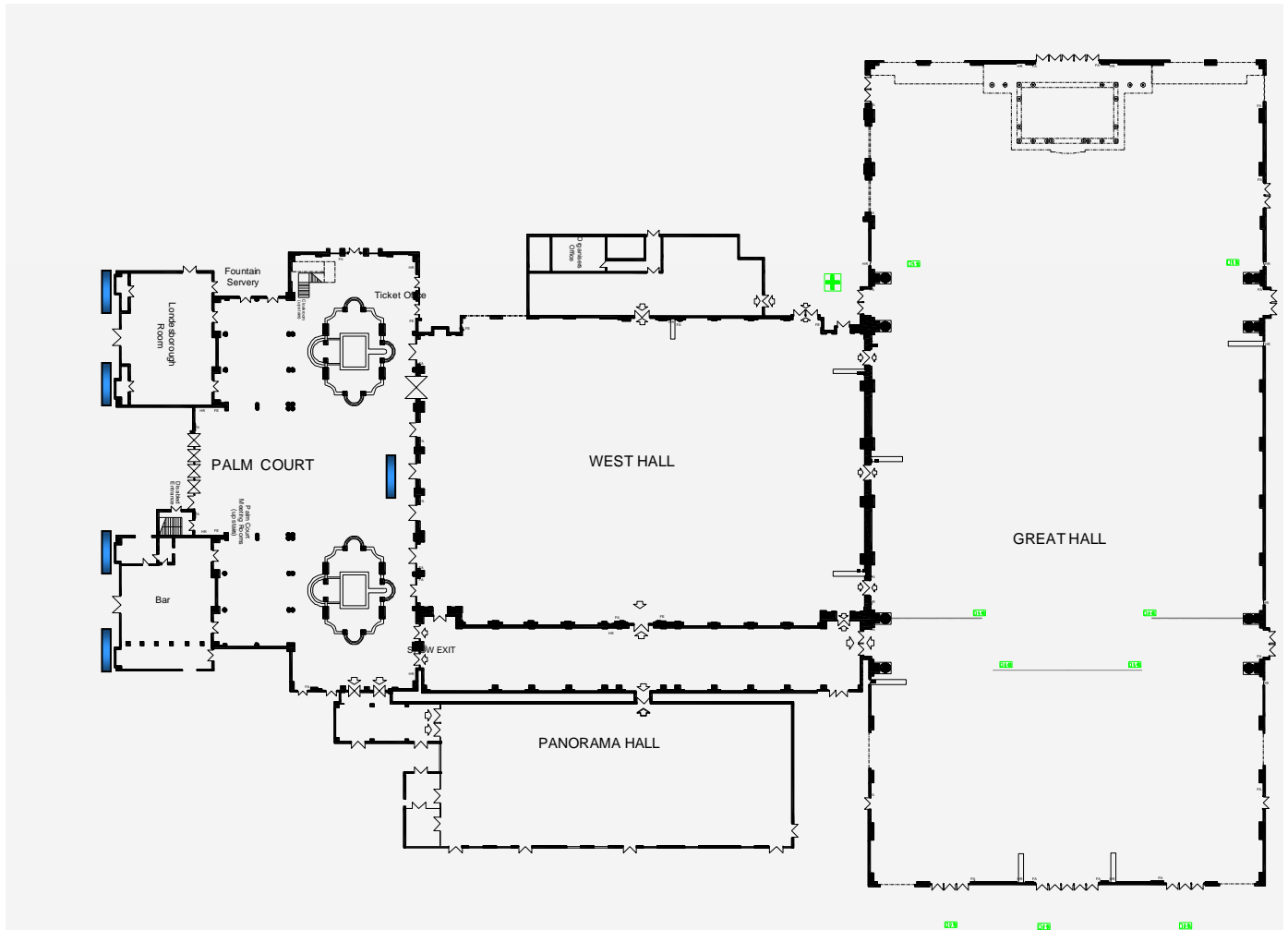


GENERAL INFORMATION

RIGGING IN GREAT & WEST HALL

Banner rigging outside main entrance (PC) and limited banners inside Palm Court (See Sites Marked  below)

AutoCAD plans are available from Outback for the Great Hall, West Hall and a site plan similar to the one shown below. Simply call 020 8993 0066 or e mail enquiries@outbackrigging.com for a copy.



HOUSE RULES

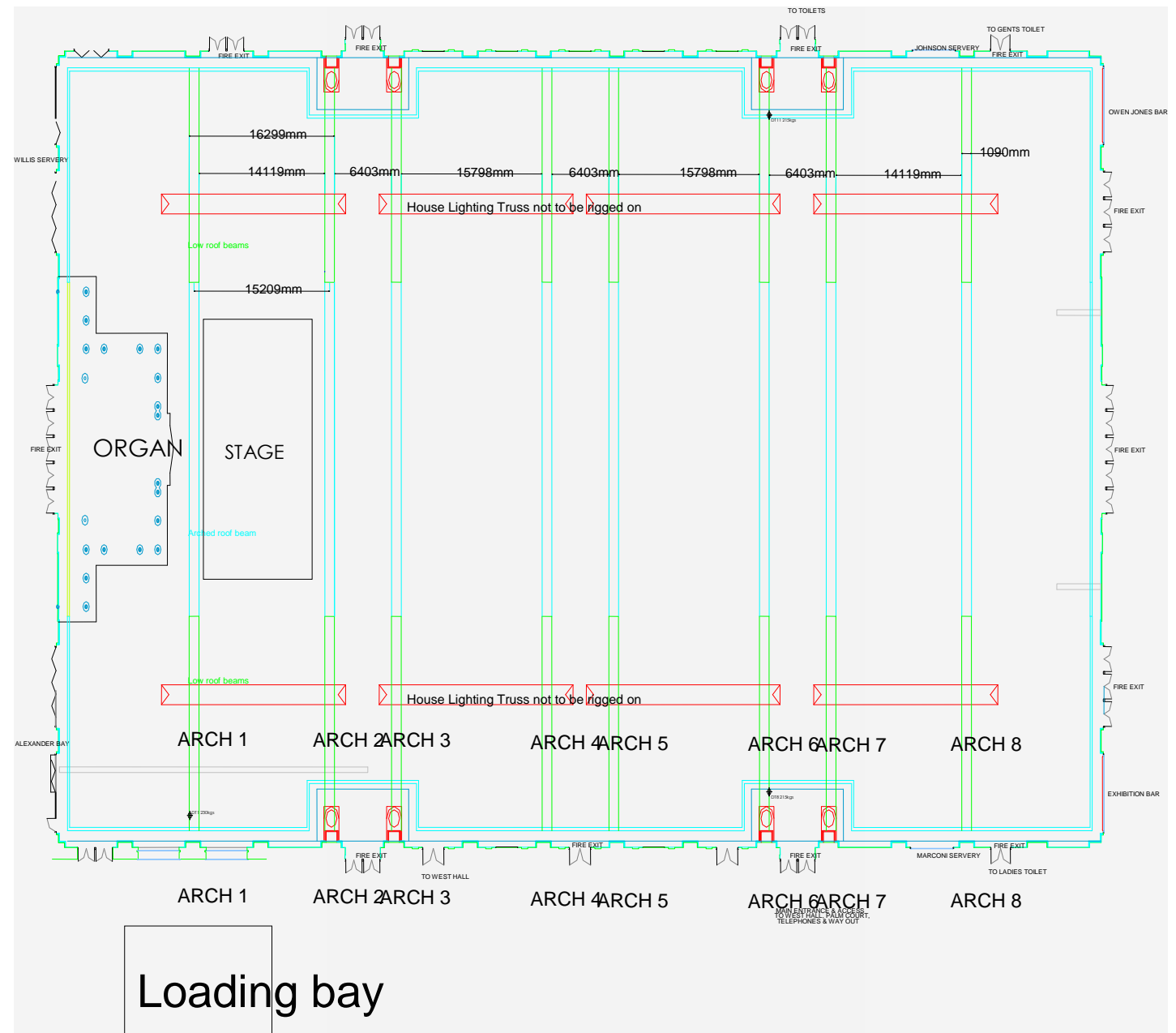
Outback is the only rigging company that can make an attachment to the fabric of the building i.e. supply you with primary rigging points. From this point onward you are free to use your own suppliers provided ALL equipment is LOLER compliant and current test / inspection certification is made available with your risk and method statements and presented to the Events Team at Alexandra Palace. Finally you will need to produce an accurate rigging plot two weeks in advance of your tennancy showing point loads in kg.

Outback will be only too happy to provide you with this entire service taking you from your first site visit through your production planning process and finally supplying lighting trusses hoists and PA rigging etc. to suit your needs. It is worth noting that because of our unique status at Alexandra Palace, choosing Outback to rig your entire show will save you time and money and ensure that there are no unwanted surprises during build up.

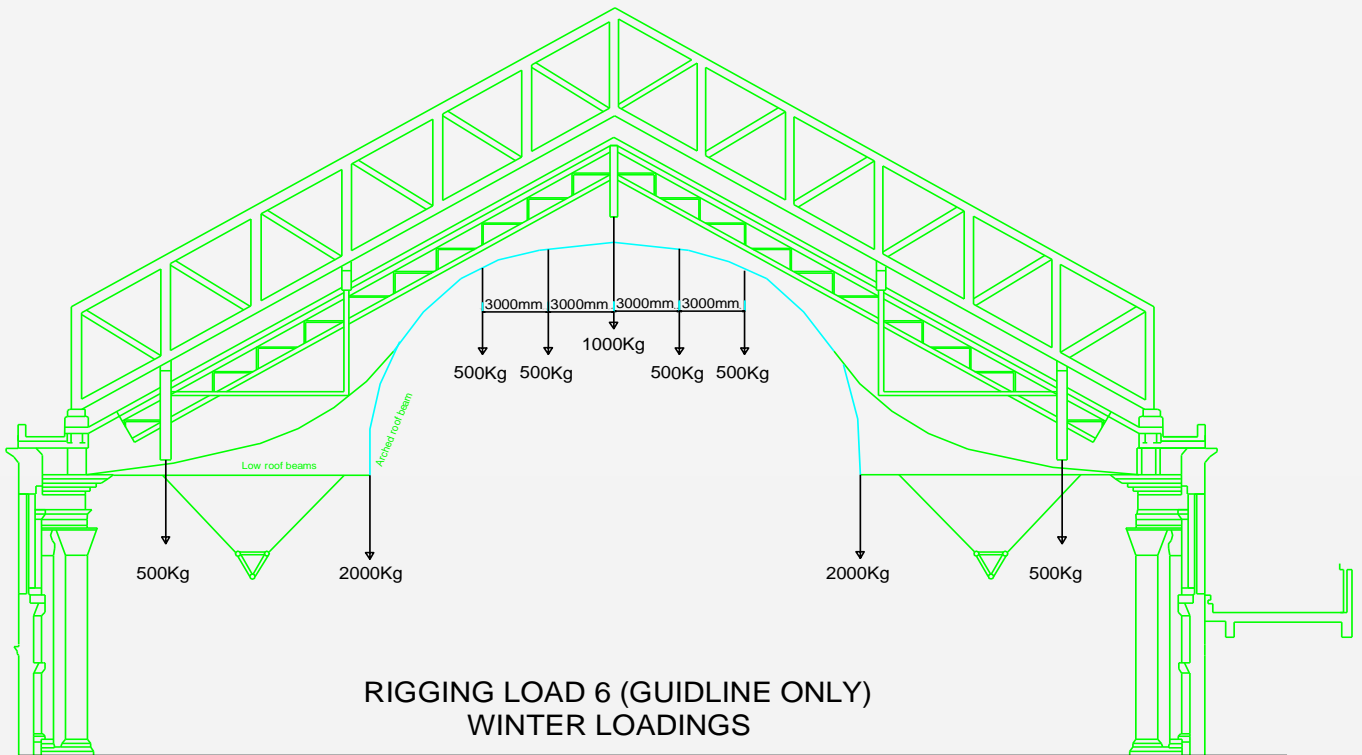
ALLOWABLE LOADS GREAT HALL

The Great Hall is approximately 116m long by 55m wide with a maximum arch height of 24m. The simple rule of thumb in the Great Hall is, during summer, 15 tonnes per arch and, in winter (Nov to March), 7 tonnes per arch. It is possible to plan rigging outside these parameters, however, Alexandra Palace will levy additional charges in order to gain permission from the local authority.

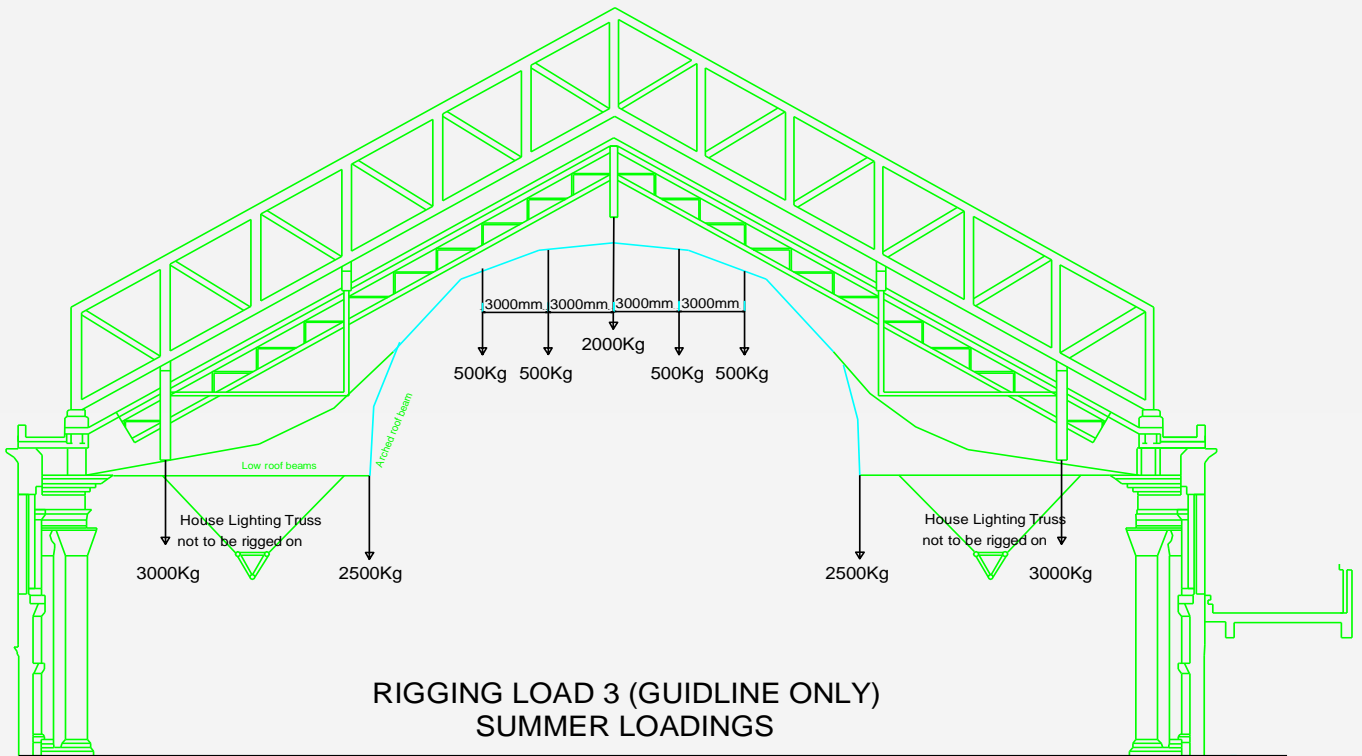
If you have any doubts or questions do not hesitate to contact Outbacks Operations Director Stuart Cooper stuart@outbackrigging.com mob. 07710 975 678 or Outbacks Technical Director Conrad Ryan conrad@outbackrigging.com mob. 07889 102 377.



TYPICAL LOAD SCENARIOS GREAT HALL



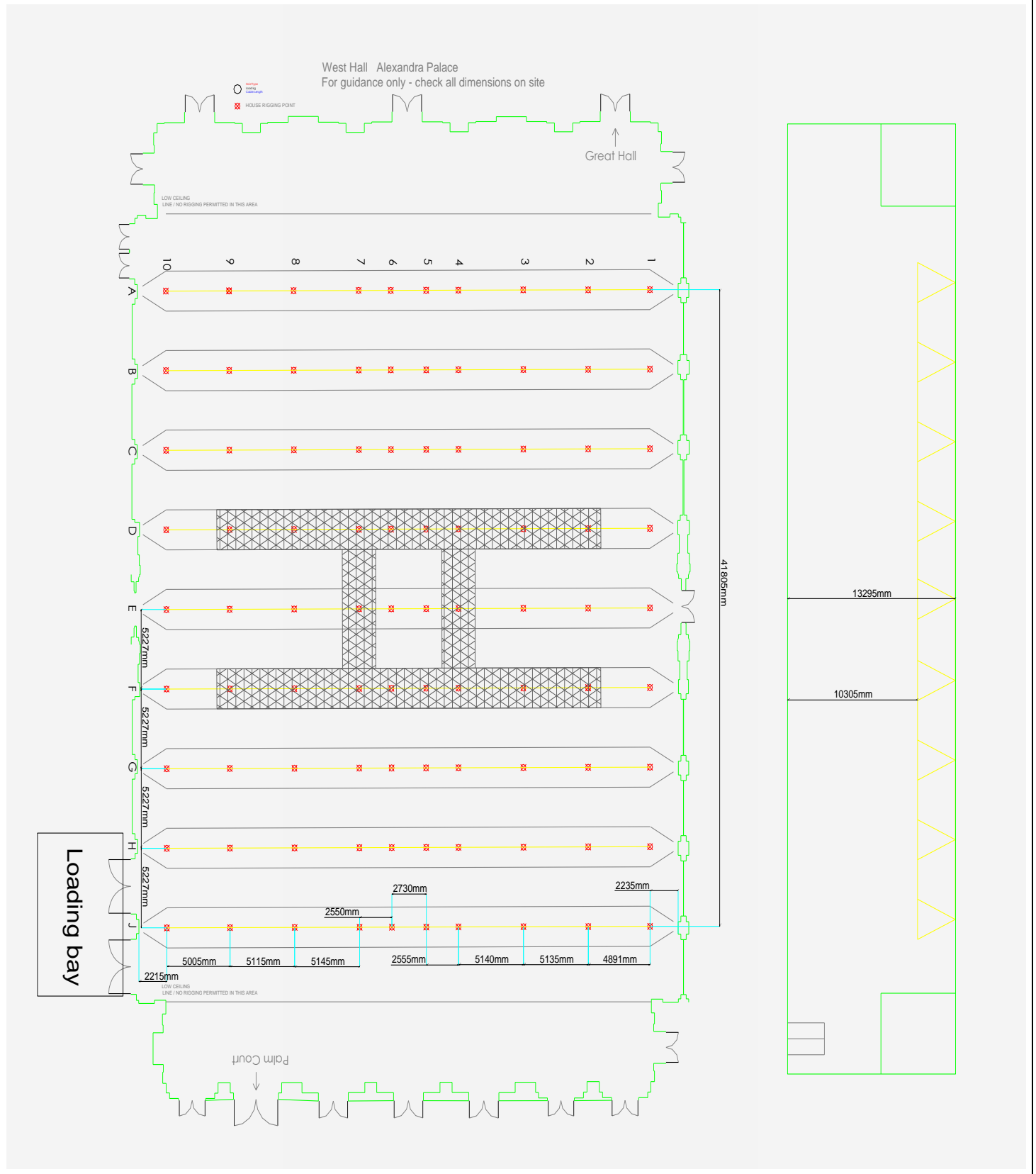
VIEW TO ORGAN FROM CENTRE OF HALL



VIEW TO ORGAN FROM CENTRE OF HALL

ALLOWABLE LOADS WEST HALL

The West Hall is approximately 62m long by 42m wide a maximum height to the roof trusses of 10.3m. The simple rule of thumb in the West Hall during summer and winter is 1500 kg per roof truss with 500kg point loads. It is possible to plan rigging outside these parameters, however, Alexandra Palace will levy additional charges in order to gain permission from the local authority. If you have any doubts or questions do not hesitate to contact Outbacks Operations Director Stuart Cooper stuart@outbackrigging.com mob. 07710 975 678 or Outbacks Technical Director Conrad Ryan conrad@outbackrigging.com mob. 07889 102 377. Please note that rigging under the cat walk is generally restricted to dead hangs.



ACCESS EQUIPMENT

Alexandra Palace always strives to deliver an event to the highest level of health and safety. Current working at height regulations stipulate that whenever possible MEWPS should be used for access rather than ladders or rope access etc.

With this in mind the house require that you use cherry pickers whilst on site as your primary means of access.

GREAT HALL

For complete access in the Great hall S125 and S85 cherry pickers are required and depending on the size of your event and the speed in which you require your points installing you may need two. To back these up and for access to trusses for focusing we suggest a Z45 machine (bi fuel) to prevent hold ups due to loss of charge.

WEST HALL

Rigging in the West hall requires the Z 45 cherry picker only (two machines if time is tight)

HIRE

Again you are free to supply these yourselves , failing that Outback are happy to supply S85 and S125 machines for **£ 900.00 and £ 1500.00 + vat per 5 day week including transport and Z 45 machines for £ 450.00 + vat per five day week including transport.**

Outback also have a fully comprehensive range of truss, hoists and rigging located at our Park Royal warehouse .To find out more visit our web site www.outbackrigging.com or call 020 8993 0066.

Outback Rigging Ltd
Unit 5, Kendal Court
London. W3 0RU.



0208 993 0066
Web: www.outbackrigging.com

